

# LOHAS

AUSTRALIA

BRICK COLLECTION

ROMAN HANDMADE

BRICKS

SPEC GUIDE

LOHASAU.COM

## ABOUT

Created by hand, LOHAS Roman handmade bricks are traditionally molded by expert craftsmen to ensure an everlasting building. LOHAS handmade brick range adds a unique warmth and character to any architectural design from historical restorations to new buildings. The hand crafting process creates a distinctive uniqueness to each brick, that conventional industrially produced bricks cannot create.



WHITE



BLANCO



CREMA



CLARO

CREAM



## SPECIFICATIONS

**Texture** Handmade

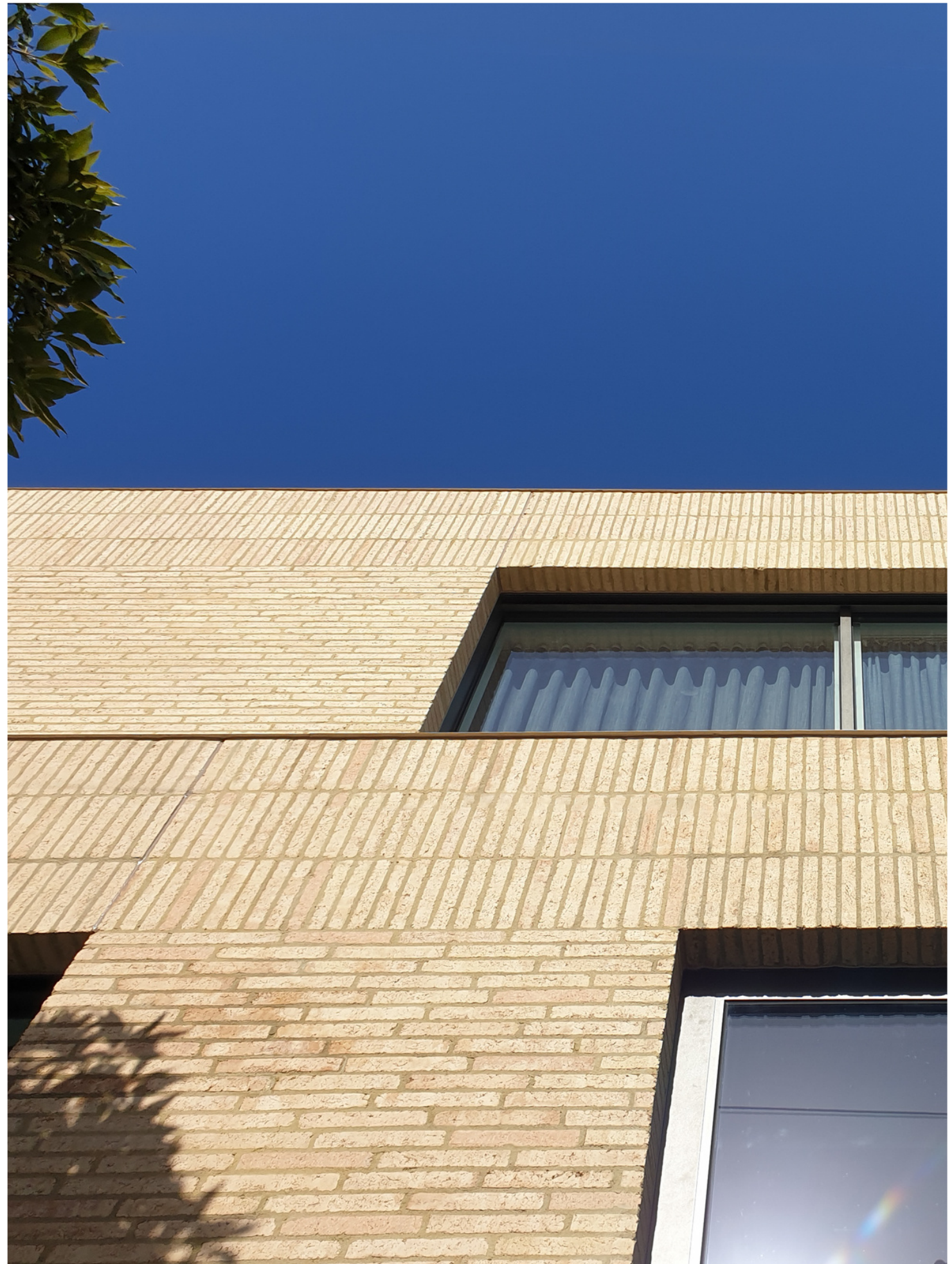
**Dimensions** 232 x 111 x 36 mm  
272 x 131 x 42 mm

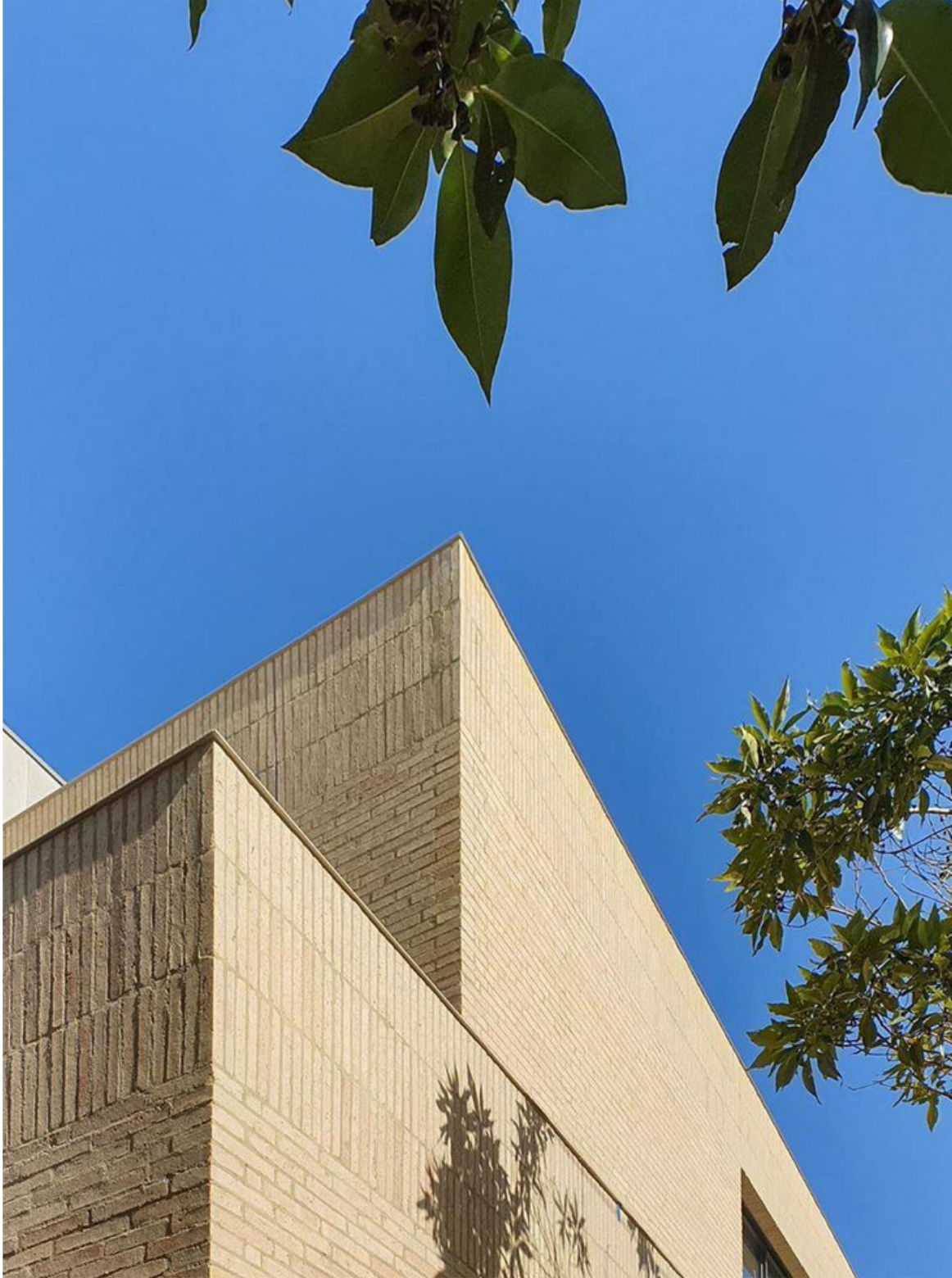
**Weight** 1.75 kg  
2.90 kg

**Coverage** 85 Bricks per sqm  
65 Bricks per sqm

**Density** 1.900 kg/m<sup>3</sup>

**RICHMOND HOUSE**  
CLARO





#### **Richmond House by B.E. Architecture**

An original Victorian works cottage that was modified and restored with a two-storey rear addition. Thoughtful design and attention to every detail. Both the existing cottage and rear addition are separated by a courtyard with a glazed link that visitors to the property can enter from the street without having to walk through the front period building.

The external façade is created from our Roman handmade bricks in the colour Claro, sourced from Spain which was chosen for its particular size, colour, and texture. Exceptional design and execution by B.E. Architecture & Dome.



LEVANTE



ROJO

RED





Kalida Sant Pau Centre

BROWN

POMPEYA





TATE Kew Project



**TATE Kew Victoria Project by Cera Stribley**

LOHAS was thrilled to have been part of this incredible project. The TATE Kew Victoria project incorporated our custom Roman Handmade bricks to create an impossibly unique, elegant and timeless home. The form, shape and colour of the bricks used for the facade purposefully enhance the surrounding landscape, creating a level of modern refinement. The cohesion of the bricks within the roof and the facade is creating attraction due to its uniqueness.

VOLGA



PIRINEO



GREY

This unique brick range is a solid pressed brick with six visible faces, making it possible to use it both for façades, as well as for paving and partitions. This versatility achieves integral works where a single model covers several finishes.

Its technical characteristics together with the handcraft aesthetics perfectly merge the traditional image of classic bricks with the high performance of the best ceramic products and also avoiding CO2 emissions into the atmosphere, thanks to the exclusive use of Biogas during the fabrication process.

# BLACK

TEIDE



# LOHAS

## CONTACT US

P 02 9566 2114  
E [info@lohasau.com](mailto:info@lohasau.com)

W [lohasau.com](http://lohasau.com)  
IG [@lohas\\_australia](https://www.instagram.com/lohas_australia)

LOHAS Australia is a proud  
distributor of the Piera product  
range.

**PiERA**  
ECO-CERAMICA