

LOHAS

AUSTRALIA

TILE COLLECTION
BRICK TILES
SPEC GUIDE

LOHASAU.COM





BRICK TILES

The Brick Tiles, are a authentic choice due to its characteristics, the extruded brick slip is sustainable and can be used for both internal and external application. It can be laid as a flooring as well as a facade. The Brick Tiles, eliminates the need and cost to cut down bricks for use with prefabricated panels and other cladding solutions.

They are a highly durable, sustainable and cost-effective choices for the construction. Meanwhile, remaining a sustainable choice to create authentic brick facade for both external and internal applications.

- The Brick Tiles are available in a range of 5 natural clay colours and 3 different sizes, a square, a paver size and a brick size.

150mm x 150mm

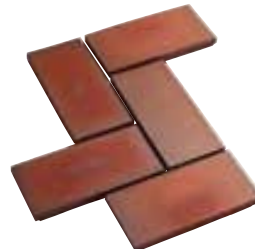
215mm x 102.5mm

215mm x 65mm

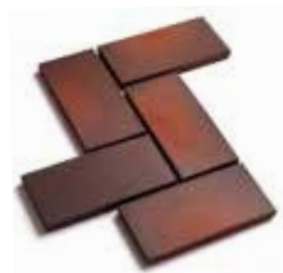
Staffordshire red



Staffordshire light multi



Staffordshire dark multi



Staffordshire brown brindle



Staffordshire blue



Technical Specifications for Quarry Tiles

COLOURS: Staffordshire red / light multi / dark multi / brown brindle / Staffordshire blue

SIZES: 215mm x 102.5mm, 215mm x 65mm and 150mm x 150mm

TEXTURE: Smooth

MANUFACTURE: Extruded

PACKING ON PALLETS: 1350 pieces on a pallet for 215 x 102.5 x 18mm size 1890 for 215 x 65 x 18mm size

COVERAGE: per m2 40 for 215 x 102.5mm size with 10mm joint 60 for 215 x 65mm size with a 10mm joint

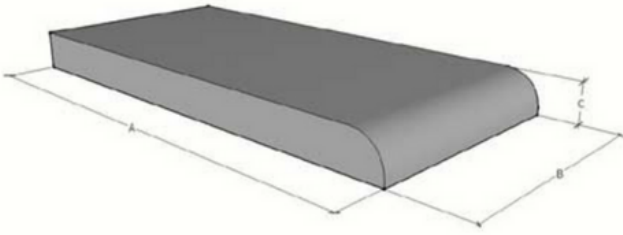
PROPERTIES	BS EN 14411 GROUP A1b REQUIREMENT	TYPICAL VALUES
Dimensions and surface quality Length x Width Thickness 18mm Straightness of sides Rectangularity Surface flatness	Average tolerance $\pm 2\%$ Average tolerance is $\pm 10\%$ within $\pm 0.6\%$ within $\pm 1\%$ Centre curvature $\pm 1.5\%$ Edge curvature $\pm 1.5\%$ Warpage $\pm 1.5\%$	within $\pm 2\%$ within $\pm 5.5\%$ within $\pm 0.2\%$ within $\pm 0.2\%$ Centre curvature $\pm 0.7\%$ Edge curvature $\pm 1.0\%$ Warpage $\pm 0.7\%$
Physical properties Water absorption Breaking strength Resistance to deep abrasion Frost resistance Slip resistance Bond strength Moisture expansion Reaction to fire	0.5 < 3% Min 1100N Max 275mm ³ Value to be stated Pendulum test results exceeding 36 indicate low slip potential Inclined platform in shod conditions Inclined platform in wet barefoot conditions C2 Cementitious adhesives Reaction resin adhesives Mortar No requirement Value to be stated	1.50% 2995N 106mm ³ No damage after 100 cycles Dry value av 96 wet value av of 58 on slider 55 for Staffs blue Dry value av 63 wet value av of 55 on slider 96 for brown brindle Category R11 which indicates that they are considered not to be slippery in wet or greasy conditions. Category C which is the highest rating for slip resistance. >1.0 N/mm ² >2.0 N/mm ² 0.15 N/mm ² Negligible A1
Chemical properties Resistance to staining	Minimum requirement 3	Paste stain 5 Chemical/oxydising stain 4 Film stain 3



Quarry Tile Fittings

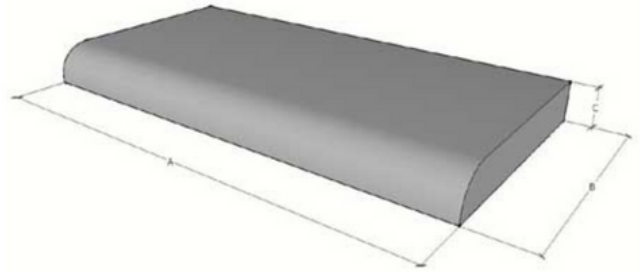
18mm thick, they are manufactured from the proven Etruria Marl clay, which becomes dense when fired, and is hard wearing and resistant to acids, alkalis, oils, grease and fats. In pendulum tests, where anything higher than 36 indicates low slip potential, our Blue quarry tiles score a dry value average of 63 and a wet value average of 58 on slider 55 which indicates that they are even suitable for use in shower areas, changing rooms and swimming pools. They are classified as R11 which indicates they are considered not to be slippery in wet or greasy conditions and Category C which is the highest rating for slip resistance in wet barefoot conditions.

Round Edge Short



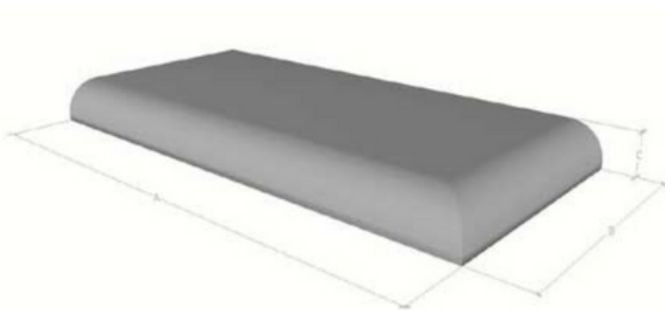
Δ	A	B	C
MM	215	102.5	18
MM	215	65	18
MM	215	100	18
MM	150	150	18

Round Edge Long



Δ	A	B	C
MM	215	102.5	18
MM	215	65	18
MM	215	100	18
MM	150	150	18

Double Round Edge



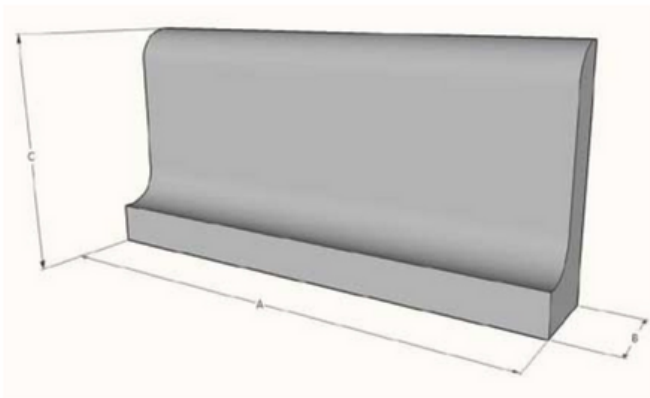
Δ	A	B	C
MM	215	102.5	18
MM	215	65	18
MM	215	100	18
MM	150	150	18

Step Tread



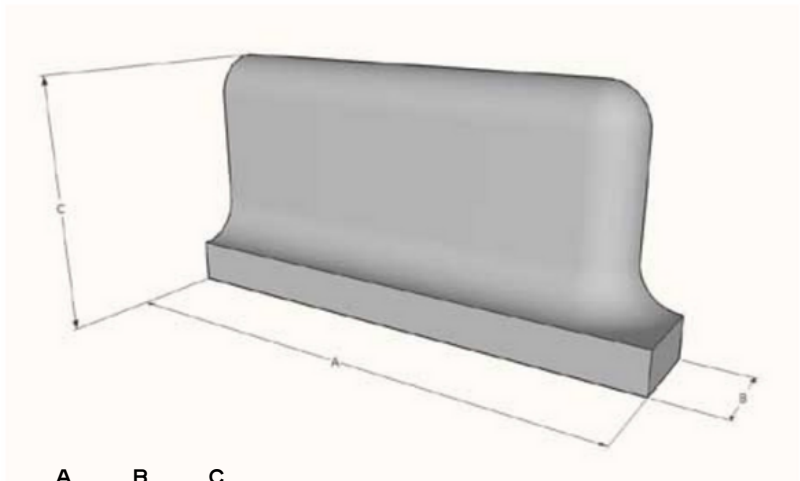
Δ	A	B	C
MM	215	102.5	18

Coved Based Round Top



Δ	A	B	C
MM	215	36	102.5

Coved Based Round Top External



Δ	A	B	C
MM	215	36	102.5



LOHAS

CONTACT US

P 02 9566 2114
E info@lohasau.com

W lohasau.com
IG [@lohas_australia](https://www.instagram.com/lohas_australia)

LOHAS Australia is a proud distributor of the Ketley Brick product range.

